



# CU Cradle2Career

Pathways to Success for Every Student



JANUARY 29, 2015

WWW.CUCRADLE2CAREER.ORG

**“We cannot always build the future for our youth, but we can build our youth for the future.” -- Franklin Delano Roosevelt**

### **NEW MEMBERS to the LEADERSHIP COUNCIL:**

Bergners  
Michael Ujcich

Big Brothers/Big Sisters of  
Champaign County  
Eric Batsie

BIGG Success  
George Krueger

Busey Bank  
Joshua Hinds

Champaign Park District  
Tammy Hoggatt

Champaign West Rotary  
Jane Solon

Child & Family Connections  
#16 Kim Woolridge

DREAAM Project  
Tracy Dace

Faith United Methodist  
Church Doug Abbott

Litania Sports Group  
Mary McGrew

Presence Covenant Medical  
Center Alejandra Coronel

TheCitizen4Blog  
Charles Schultz

New Year’s resolutions often fail because change is difficult. To really make change happen requires a “digging in” for the long haul and a gratitude for the bright spots we see.

CUC2C is about change, so it isn’t a surprise we too experience barriers. What keeps us going are all of you. You are the cardinals that brighten our day whenever it feels like we are slogging through the snow. Thank you for “digging in” with us.

Denise, Lee Anne, and our Operations Team Members



## **Goal Team Updates:**

### **Kindergarten Readiness (KR) Action Plan:**

The KR goal team is in the process of developing 3 strategies for implementation in the 2<sup>nd</sup> half of 2015.

- **Child Find:** Connecting *as early as possible* those families in need of supportive services to enhance their child’s development with the appropriate services.
- **QuEL:** Bringing “quality early learning experiences” to neighborhoods the school districts have identified as having the most need.
- **Community Awareness Campaign:** Reaching Champaign County with messages about enhancing social emotional development in young children.

Each Strategy team is interested in adding members to receive more community input. For more information, contact Patti Hood, KR co-facilitator [p.hood@cuc2c.net](mailto:p.hood@cuc2c.net).



## Work Force Readiness Goal Team

Co-Facilitators:

*Laura Weis*

(Champaign County Chamber of  
Commerce, anchor)

*Debbie Hensleigh*  
(Beringer Reality)

Members:

Bergner's

*Michael Ujchic*

Carle Hospital & Physicians Group  
*RaeAnn Ronk*

Champaign County Economic  
Development Corporation  
*Craig Rost*

Champaign County Federation of  
Teachers *Chris Schultz*

Champaign Park District  
*Tammy Hoggatt*

Champaign-Urbana Schools  
Foundation *Molly Delaney*

Developmental Services Center  
*Annette Becherer*

Education for Employment  
System #330  
*Nick Elder & Renae Kirkton*

East Central Illinois Buildings and  
Trades Center *Matt Langendorf*

Human Kinetics  
*Tara Swearingen*

Litania Sports  
*Mary McGrew*

Parkland College  
*Tawana Nickens*

Two Men and a Truck  
*Dan Shunk*

Unit 4 Schools  
*Marc Chagnon*

Unit 116 Schools  
*Tammy Newton*

**Our Lives Begin to end  
the day we become  
silent about the things  
that matter – Dr. Martin  
Luther King, Jr.**



## **The Workforce Readiness (WFR)**

To date, the Workforce Readiness Goal team has had three meetings. Their agreed-upon working goal definition is: The Workforce ready student has the academic foundation, technical ability, work habits and interpersonal skills to succeed. Each of the four attributes has also been defined.

In the next few months, the team will:

- Survey community employers as a means to establish how “workforce ready” our students currently are and to ascertain the gaps in our preparation of students
- Seek input from students/families as to workforce readiness

For more information, contact Debbie Hensleigh, WFR co-facilitator at [dkhensleigh@gmail.com](mailto:dkhensleigh@gmail.com). Team members are listed to the side.

## **Did You Know?**

- Close to 784 C-U eighth-graders attended this year’s Education for Employment Career Fair? Through the online “Career Cruising” platform, students indicated their interests and got an individually tailored schedule for the day. For more information, check-out: <http://www.efe330.org/>.
- Real life application helps many students recognize the value of school. Yet in 2014, the Champaign Summer Youth Employment program had more students than capacity. The barriers? Host sites and funding. For more information, contact Orlando Thomas at [thomasor@champaignschools.org](mailto:thomasor@champaignschools.org).
- Research shows 90% of a child’s critical brain development happens by age 5. According to the Census Bureau, in 2013, almost 6.2 of the Illinois population were children under the age of 5. However, child care is one of the lowest paying professions (2013 annual salary = \$21,490); yet vital to the U.S. economy (employee absence cost businesses \$3 billion annually in the United States). For more information see “Media Toolkit”: <http://www.usa.childcareaware.org/costofcare>.

**We would welcome you to join the CUC2C Leadership Council. Our next meeting is on Thursday, February 19, 2015 from 3:30 pm - 5:00 pm. For more information, contact Denise Martin at: [Denise@mhfa.net](mailto:Denise@mhfa.net)**

## Communications Team

Members:

Champaign County  
Realtor/Community Member *Dionne Clifton*

East Central Illinois Building &  
Trades Council *Kate Klipp*

Child Care Resource Service  
*Brenda Eastham & Jackie Farber*

## Community Engagement Team

Members:

Banks Bridgewater Lewis Fine Arts  
Academy *Nathaniel Banks*

Car-X

*Parham Parastaran*

Community Member  
*Joan Zernich*

CUSF Board Member  
*Steve Gardner*

McKinley Foundation  
*Kathleen Robbins*

Midland States Bank  
*Becky Von Holten*

Pavlov Media, Inc.  
*Jon Rector*

Reynolds Towing, Inc.  
*Susan Jepsen*

University of Illinois, Office of  
Minority Student Affairs  
*Wallace Southerland, III*

University of Illinois, School of Social  
Work *Wynn Korr*

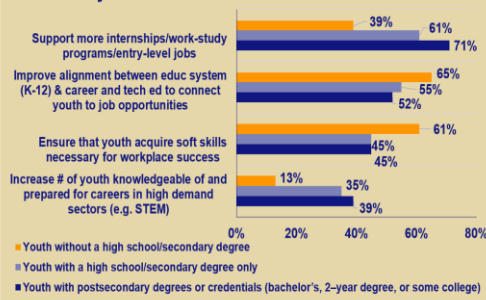
**My humanity is bound up  
in yours, for we can only  
be human together.**

*--Desmond Tutu.*



## What Can Be Done About Youth Employment?

### Top Three Actions That Could Make the Most Difference in Reducing Youth Unemployment in Your Community



This chart came from a fall 2014 survey of 148 United Way CEO's on youth unemployment.

Other findings included:

- Youth unemployment impacts youth *regardless of education level* – even with post-secondary credentials (49%)
- Coordinated cross-sector community efforts is the best way to tackle the problem (76%), but only 15% currently have one

- Business participation in “tight” public/private collaborations is vital to the school to work transition (87%)

## Shout Outs:

- Thanks to our newly formed Communications Team, we are working on our website, social media and quarterly newsletter. Team members are listed to the left.
- Hard work started for the Community Engagement Team. They are currently creating the “Message” of CUC2C. Team Members are listed to the left.

## Want to Join In?

Making a “needle-moving” impact requires work—ask anyone on a goal team. Yet, many tasks do not require a regular commitment on a team. See if any of these will work for you:

- If you want to learn more about early childhood, our K.R. strategy groups need note-takers. Commitment: Approximately 2 hours a month per group (you are welcome to help in more than one group). For more information, please contact Patti Hood at [p.hood@cuc2c.net](mailto:p.hood@cuc2c.net).
- If you like “google searching”, our Research/Data team has specific projects that take as little as 2 hours. For more information, please contact Randy Rodriguez at [raddison@msn.com](mailto:raddison@msn.com).
- If you like tracking down facts about local programs, we need help in the Kindergarten Readiness and Academic Success areas. May involve phone calling too. For more information, contact Lee Ann Kelly at [l.kelly@cucradle2career.org](mailto:l.kelly@cucradle2career.org).